

1 16 Patton
 16 Patton Ave. — 828.236.2889
 Tues - Sat 11 - 6; MAY - OCT: Sun 1 - 6
 www.16patton.com

Original contemporary fine art by Southeastern artists presented in an intimate classic gallery setting. Paintings, drawings, sculpture and fine craft for residential and private collectors.

2 Aesthetic Gallery
 6 College St. — c.828.301.0391
 — w.828.398.0219
 Tues - Sat 12 - 6, Fri 12 - 8
 www.aestheticgallery.com

Textiles from around the world. Showcasing iconic photography by local artists reinterpreted into vivid, intricately detailed embroidery. Also featuring original aboriginal, elephant art, Zimbabwe sculptures, ceramics and colorful wire baskets.

3 Alexander & Lehnert
 Grove Arcade, 1 Page Ave.
 Suite 142 — 828.254.2010
 Mon - Sat 10 - 6
 www.alexanderandlehnert.com

Located in the historic Grove Arcade, this fine jewelry gallery features the creative works of Asheville artists Michele Alexander and Bill Lehnert. Custom orders are a specialty.

4 American Folk Art and Framing
 64 Biltmore Ave. — 828.281.2134
 Mon - Sat 10 - 6; Sun 12 - 5
 www.amerifolk.com

Contemporary folk art, including painting, wood fired pottery, found object sculpture, wood carving and jewelry. Providing innovative solutions for the preservation and presentation of fine art.

5 Appalachian Craft Center
 10 No. Spruce St.
 — 828.253.8499
 Mon - Sat 10 - 5; Closed Sun
 www.appalachiancraftcenter.com

Come share our love of authentic mountain handicrafts. Beautiful pottery, face jugs, quilts, mountain-made toys and handmade rugs await your pleasure.

6 Ariel Gallery
 19 Biltmore Ave. — 828.236.2660
 Tues - Sun 11 - 6
 www.arielcraftgallery.com

Ariel Gallery is an artist owned gallery featuring compelling original works by renowned local artists in clay, furniture, glass, jewelry, fiber, mixed media and metal.

7 Asheville Area Arts Council
 11 Biltmore Ave. — 828.258.0710
 Mon - Fri 10 - 5
 Seasonal weekend hours, inquire within
 www.ashevillearts.com

The Asheville Area Arts Council Galleries represent local established and emerging artists and groups. Join us to see rotating exhibitions of Buncombe County artists in all media and styles.

8 Asheville Art Museum
 2 South Pack Square
 — 828.253.3227
 Tues - Sat 10 - 5; Sun 1 - 5
 www.ashevilleart.org

Come experience the best of 20th and 21st century American art at the Asheville Art Museum. Get inspired and join in the exciting, inviting and active schedule of exhibitions and public programs.

*** Open until 8 p.m. the 1st Friday of every other month — April - Dec.**

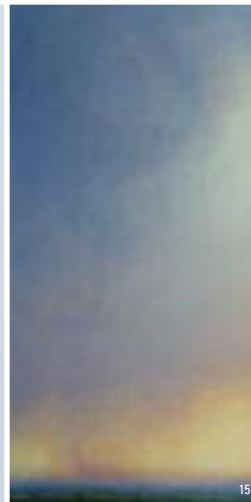
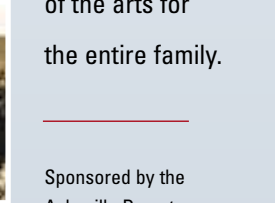
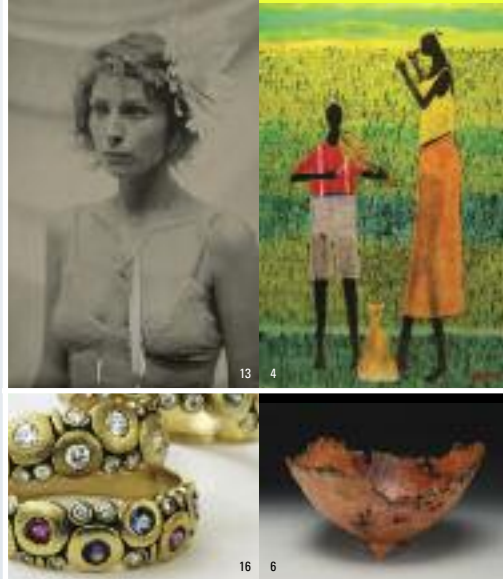
+ ART WALKS
Asheville
DOWN TOWN
2010 Gallery GUIDE

www.ashevilledowntowngalleries.org

Enjoy Asheville's downtown galleries, studios and museums featuring changing exhibitions and opening receptions.

Discover why Asheville is ranked among the top art destinations in the country.

2011 ART WALKS 2010
April 2
June 4
August 6
October 1
December 3
 Fridays
 5 to 8 p.m.
April 1
June 3
August 5
October 7
December 2



This self-guided tour explores the diversity of art in downtown Asheville! A celebration of the arts for the entire family.

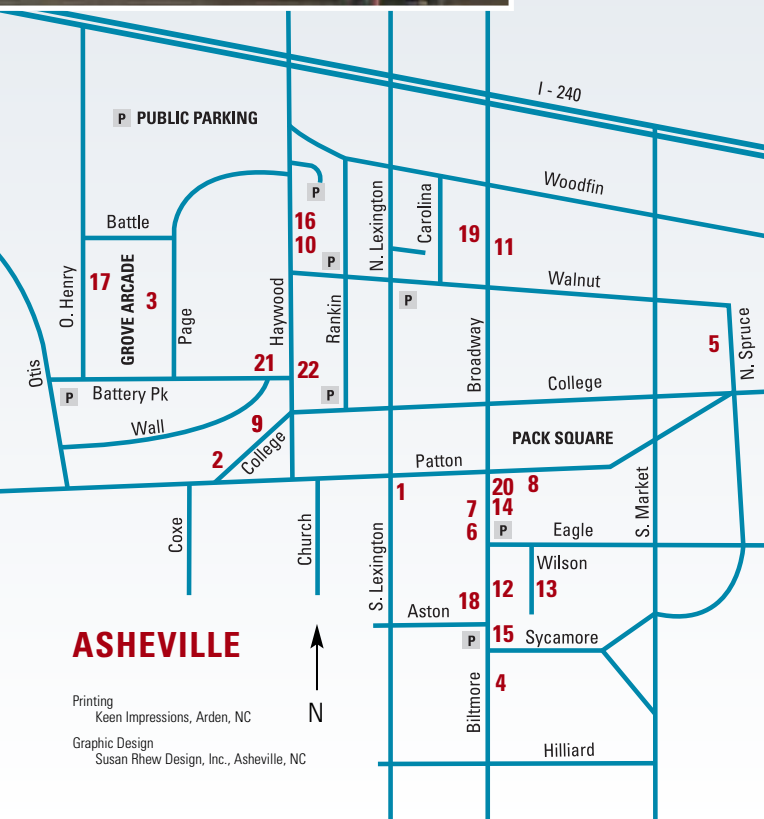
Sponsored by the Asheville Downtown Gallery Association



2010 ART WALKS

FRIDAYS
5 to 8 p.m.

April 2
June 4
August 6
October 1
December 3



ASHEVILLE

Printing
Keen Impressions, Arden, NC
Graphic Design
Susan Rhew Design, Inc., Asheville, NC



9 Asheville Gallery of Art
* 16 College St. — 828.251.5796
Mon - Sat 10 - 5, JUNE - OCT: Sun 1 - 4
JAN - FEB: Closed Mon
www.ashevillegallery-of-art.com

A partnership of 28 professional, regional artists offering original two-dimensional works from representational to abstract.

10 The Bender Gallery
* 57 Haywood St. — 828.225.6625
Mon - Sat 10:30 - 6
APRIL - DEC: Sun 12 - 5
www.thebendergallery.com

The region's largest and most diverse studio glass gallery on 2 sun filled levels features artists from across the country as well as around the world.

11 Black Mountain College Museum + Arts Center
56 Broadway — 828.350.8484
Wed - Sat 12 - 4 and by appointment
www.blackmountaincollege.org

An exhibition space dedicated to exploring the history and legacy of the world's most acclaimed experimental educational community, Black Mountain College.

12 Blue Spiral 1
38 Biltmore Ave. — 828.251.0202
Mon - Sat 10 - 6, Sun 12 - 5
www.bluespiral1.com

A stunning three-level, 15,000 sq. ft. gallery specializing in Southeastern fine art and craft. Blue Spiral 1 also represents the estate of Will Henry Stevens, an early 20th century modernist.



13 Castell Photography
* 2 Wilson Alley, Suites C & D — 828.255.1188
Wed - Fri 12 - 6; Sat 12 - 7
and by appointment
www.castellphotography.com

Owned by internationally recognized artist Brie Castell — A unique photographic Salon and Gallery dedicated solely to photo-based media. In 2010, view a range of challenging work from both national and international artists.

14 Gallery Minerva
* 8 Biltmore Ave. — 828.255.8850
Tues - Sat 10 - 6
MAY - OCT: Open 7 days
www.galleryminerva.com

A sophisticated gallery for the fine art collector. Featuring an eclectic mix by established local and museum collected artists as well as presenting exciting new talents.

15 The Haen Gallery
52 Biltmore Ave. — 828.254.8577
Mon, Wed - Fri 10 - 6; Tues + Sat 11 - 6
Sun 12 - 5
www.thehaengallery.com

The Haen Gallery is committed to providing extraordinary quality and service, as well as access to thoughtful and compelling artwork for the entire community. Our offerings will reflect the character and sensibilities of this wonderful region.

16 Jewels That Dance: Jewelry Design
63 Haywood St. — 828.254.5088
Mon - Sat 10:30 - 6
www.jewelsthatdance.com

Asheville's premier jewelry gallery and working studio of designer goldsmith, Paula Dawkins. Be dazzled with contemporary, classic, artisan and fine fashion jewelry. Unparalleled custom design and jewelry repair services available

* Open until 8 p.m. the first Friday of every other month — April - December



17 Mountain Made
* Grove Arcade, 1 Page Ave. Suite 123 — 828.350.0307
Mon - Sat 10 - 6; Sun 12 - 5
www.mtnmade.com

Featuring the work of over 80 Western North Carolina artisans. Fine handcrafted jewelry in silver, glass and beadwork. Wonderful metal, wood and pottery pieces. Local music and books.

18 Pura Vida
* 39 Biltmore Ave. — 828.439.3568
Seven Days Noon - 10
www.pura-vida-asheville.com
Local and regional artwork in a warm and friendly gift store. Featuring painting, ceramics, jewelry, candles and art-apparel. Open Late!

19 The Satellite Gallery
* 55 Broadway — 828.505.2225
Tues - Sun 11 - 6
www.thesatellitegallery.com

Specializing in artwork that represents the next wave of innovative and creative artists that are rising from the underground of contemporary street and pop culture.



20 Susan Marie Designs
* 4 Biltmore Ave. — 828.277.1272
Tues - Sat 10 - 5:30
www.susanmippiiddesigns.com

De Beers and AGTA Spectrum award winning designer and goldsmith Susan Marie Phipps welcomes you to select from her one-of-a-kind creations or customize the design of your dreams.

21 Vadim Bora Gallery-Studio
30-1/2 Battery Park Ave. — 828.254.7959
Tues - Sat 11 - 5
during featured exhibitions and by appointment or chance
www.vadimborastudio.com

Spacious second floor European art salon-style showroom and working studio, specializing in international, regional and local sculpture, painting and print work, in addition to classes.

22 Woolworth Walk
* 25 Haywood St. — 828.254.9234
Open Seven Days
www.woolworthwalk.com

Asheville's largest venue for visual expression by local artists including fine art exhibits, working artists on site and a 50's style retro diner.

